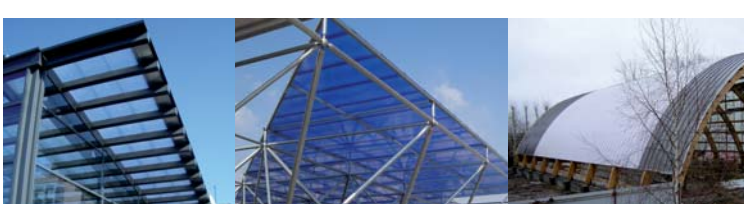
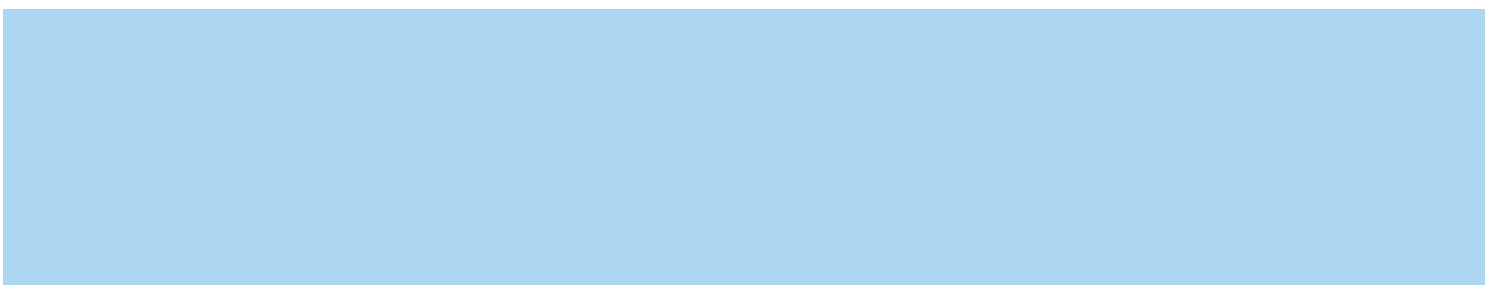


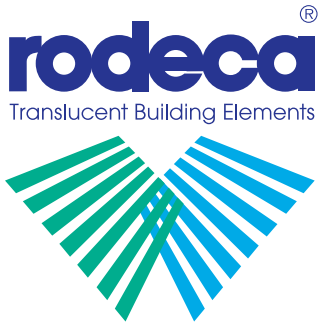


Multi Function Panels

Multi-Funktions-Paneele



Multi Function Panels



Multi Function Panels

 Multi Wall Sheets
Hohlkammerscheiben

 Translucent Building Elements
Lichtbauelemente

Multi Function Panels

Advantages

- quick and easy installation
- translucent
- heat insulating
- high temperature resistance
- versatile designing in shape, colour and function
- good long term performance through UV protection
- 200 times tougher than glass
- shatter proof

Applications

- Roofing construction
- Sports and industrial halls
- Canopies
- Roof lights - flat and curved
- Pyramids
- Natural smoke and heat exhaust
- Carports
- Patio coverings
- Wall and roof refurbishments

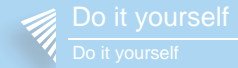
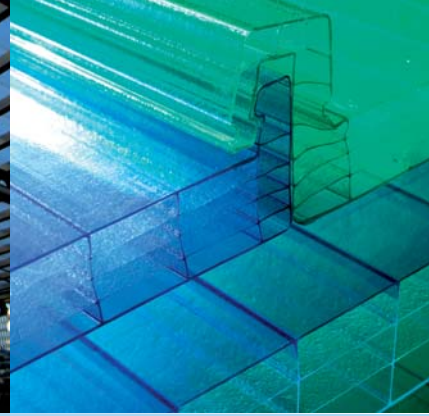
General information Multi Function Panels

Rodeca Multi Function Panels are suitable for translucent roofing applications for internal and external spaces, for both flat and curved applications. Light weight, high insulation and high impact properties provide an extremely weather resistant roofing solution. The absence of glazing bars and minimal use of alloy components creates an almost seam free, economical interior finish.

List of content









Overview Multi Function Panels	page 2
System PC 2610-4	page 3
System PC 2625-5	page 4
System PC 2253-2	page 5
System PC 2250-10-4	page 6





Overview Multi Function Panels

Rodeca Multi Function Panels are the ideal solution to introduce natural daylight into large or small interior/exterior covered spaces. These systems provide flexible solutions for roofing and canopies of various sizes and shape. Combined with its light weight, high thermal properties, impact resistance and ease of installation they are an economical daylight solution.

 <p>PC 2610-4</p>	 <p>pitched system > 5°</p>	<p>Span width 0.80m*</p>
 <p>PC 2625-5</p>	 <p>pitched system > 5°</p>	<p>Span width 1.00m*</p>
 <p>PC 2253-2</p>	 <p>pitched system > 5°</p>	<p>Span width 0.60m*</p>
 <p>PC 2250-10-4</p>	 <p>pitched system > 5°</p>	<p>Span width 0.80m*</p>

* Recommended span width for load pressure of 1.00kN/m².

Multi Function Panels - curved application

Multi Function Panels can be cold-curved over an appropriate substructure. The minimum radius depends on the panel thickness.



2610-4	minimum radius 3.00m
2625-5	minimum radius 8.00m
2253-2	minimum radius 2.00m
2250-10-4	minimum radius 3.00m

Polycarbonate panels



PC 2610-4

Colours
Standard: crystal / opal
Color version: from 400 m²
Decocolor version: from 400 m²

Thickness (mm)	10
Building width (mm)	600 (+1/-1%)
Weight (kg/m²)	2.60



PC 2625-5

Colours
Standard: crystal / opal
Color version: from 400 m²
Decocolor version: from 400 m²

Thickness (mm)	25
Building width (mm)	600 (+1/-1%)
Weight (kg/m²)	3.60



PC 2253-2

Colour
Standard: crystal / silver
Color version: from 150 m²

Thickness (mm)	3
Building width (mm)	250 (+1/-1%)
Weight (kg/m²)	1.70



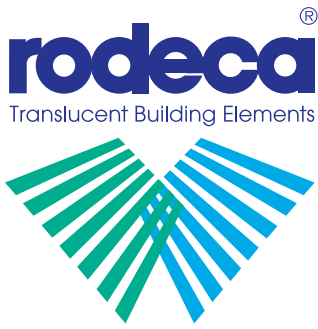
PC 2250-10-4

Colours
Standard: crystal / opal
Color version: from 300 m²

Thickness (mm)	10
Building width (mm)	250 (+1/-1%)
Weight (kg/m²)	2.20

All installation advice, application requirements and further technical information can be viewed in our technical manuals and installation guides.

RODECA GmbH
Freiherr-vom-Stein-Straße 165
D-45473 Mülheim an der Ruhr
Fon +49 (0) 208 76502-0 | Fax +49 (0) 208 76502-11
info@rodeca.de | www.rodeca.de



Multi Function Panels

Multi Wall Sheets
Hohlkammerscheiben

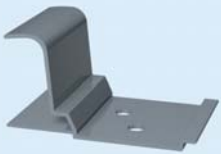
Translucent Building Elements
Lichtbauelemente

Multi Function Panels

Multi Function Panel PC 2610-4

The Multi Function Panel PC 2610-4 is a 10mm thick panel with 4 layers and a building width of 600mm.

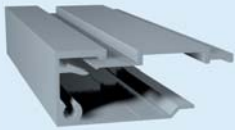
Accessories



Fastener
Item no.: 494010



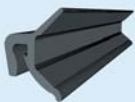
Polycarbonate end cap
Item no.: 395005



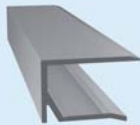
End profile
Item no.: 461040
with clamp batten
Item no.: 492001



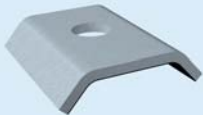
Cover plate for 461040
Item no.: 465010



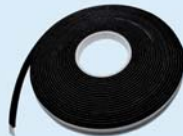
Gasket for 461040
Item no.: 902901



Drip profile
Item no.: 461011



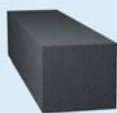
Retention washer
Item no.: 494002



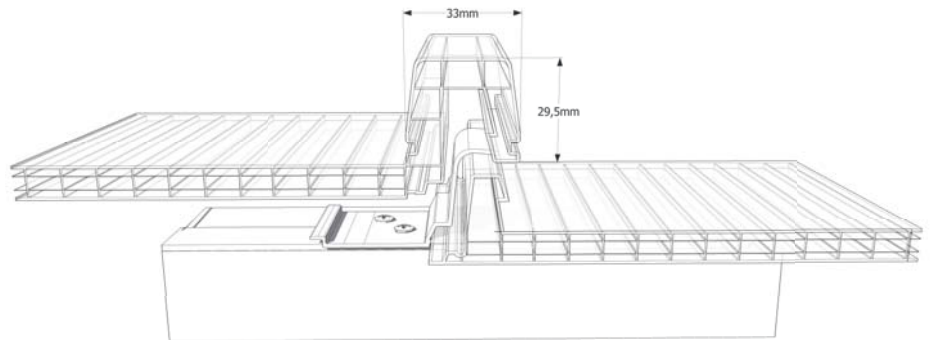
Sealing band 30*5
Item no.: 9019020005



Wall connection profile
Item no.: 470400 with gasket
Item no.: 902106



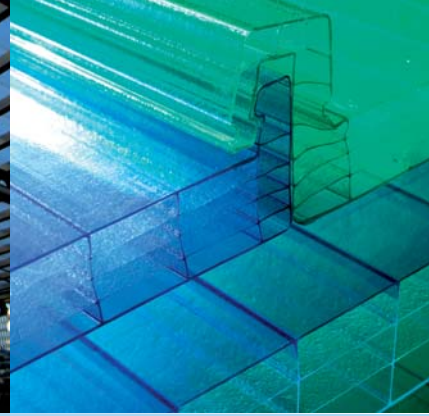
Filling piece
Item no.: 59803425565



PC 2610-4

Thickness (mm)	10
Building width (mm)	600 (+1/-1%)
Weight (kg/m ²)	2.60





RT-Thermolight
RT-Thermolight

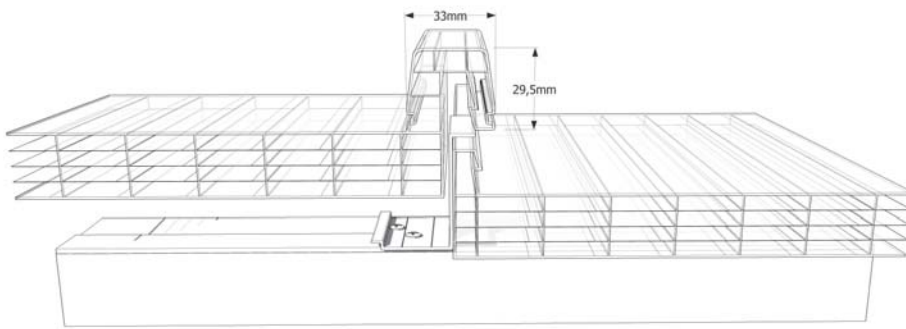
U-Panels
U-Paneele

Windows
Fenster

Do it yourself
Do it yourself

Multi Function Panel PC 2625-5

The Multi Function Panel PC 2625-5 is a 25mm thick panel with 5 layers and a building width of 600mm.



PC 2625-5

Thickness (mm)	25
Building width (mm)	600 (+1/-1%)
Weight (kg/m ²)	3.60

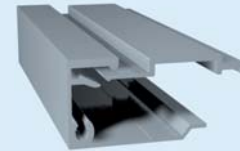
Accessories



Fastener
Item no.: 494025



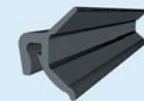
Polycarbonate end cap
Item no.: 395004



End profile
Item no.: 462540 with
Clamp batten
Item no.: 492001



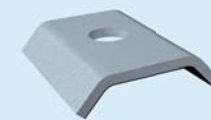
Cover plate for 462540
Item no.: 465025



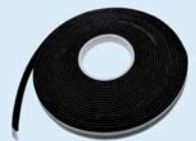
Gasket for 462540
Item no.: 902901



Drip profile
Item no.: 462511



Retention washer
Item no.: 494002



Sealing band 30*5
Item no.: 9019020005

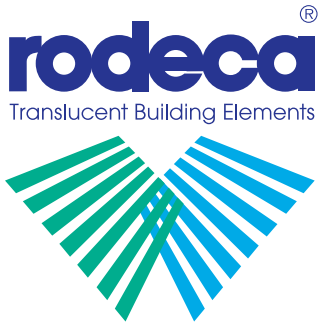


Wall connection profile
Item no.: 470400 with gasket
Item no.: 902106



Filling piece
Item no.: 59803425565

RODECA GmbH
Freiherr-vom-Stein-Straße 165
D-45473 Mülheim an der Ruhr
Fon +49 (0) 208 76502-0 | Fax +49 (0) 208 76502-11
info@rodeca.de | www.rodeca.de



Multi Function Panels

Multi Wall Sheets
Hohlkammerscheiben

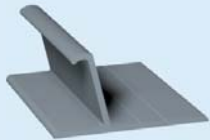
Translucent Building Elements
Lichtbauelemente

Multi Function Panels

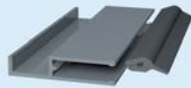
Multi Function Panel PC 2253-2

The Multi Function Panel PC 2253-2 is a 3mm thick panel with two layers and a building width of 250mm.

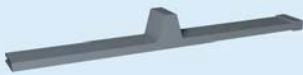
Accessories



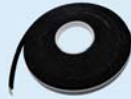
Fastener
Item no.: 494003



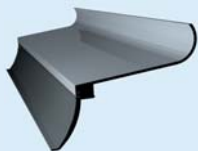
Lateral end profile
Item no.: 500664 with gasket
Item no.: 902110



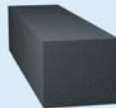
Polycarbonate end cap in
colour silver Item no.: 395001



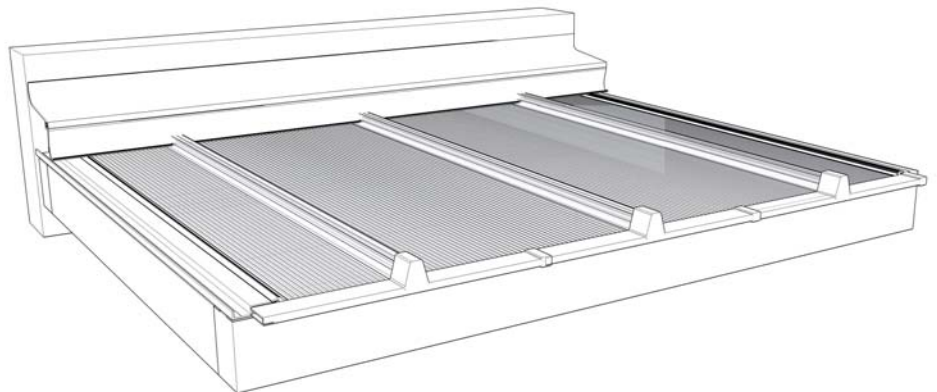
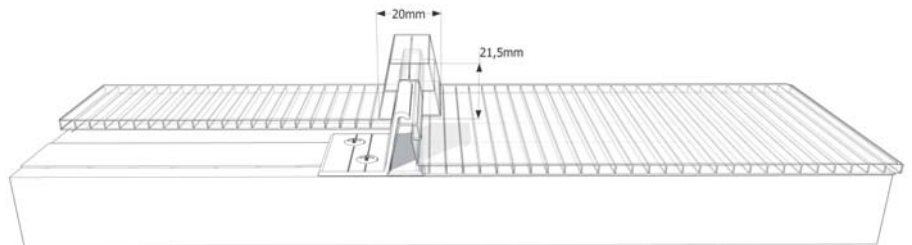
Sealing band 20*4
Item no.: 9019020004



Wall connection profile
Item no.: 470400 with gasket
Item no.: 902106

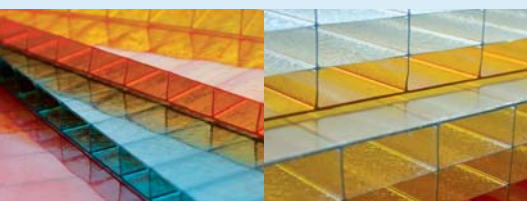


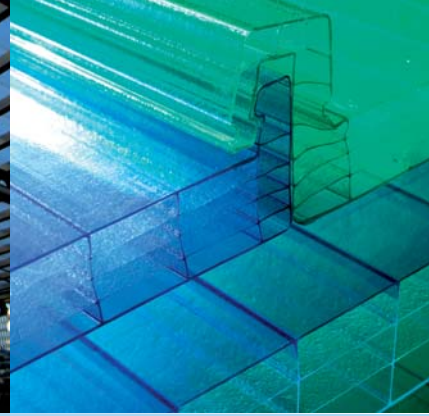
Filling piece
Item no.: 59803425565



PC 2253-2

Thickness (mm)	3
Building width (mm)	250 (+1/-1%)
Weight (kg/m ²)	1.70





RT-Thermolight
RT-Thermolight

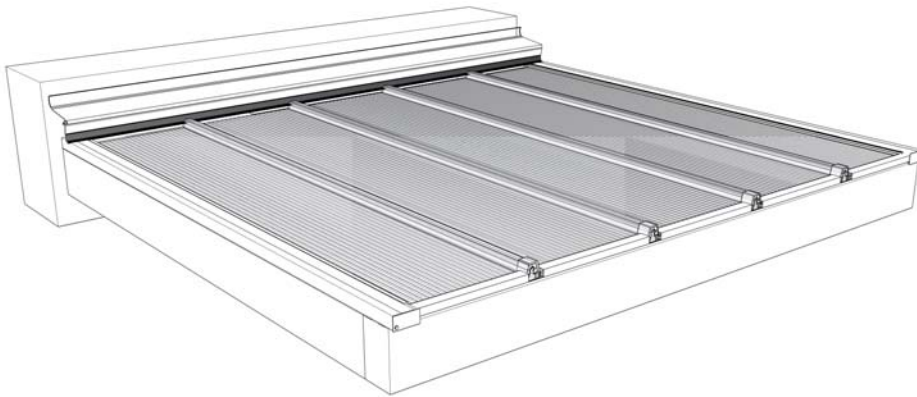
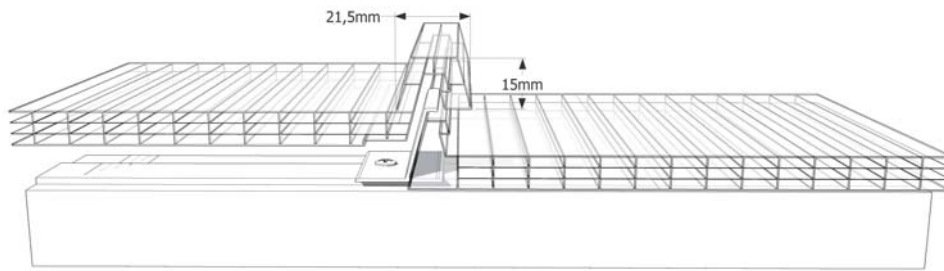
U-Panels
U-Paneele

Windows
Fenster

Do it yourself
Do it yourself

Multi Function Panel PC 2250-10-4

The Multi Function Panel PC 2250-10-4 is a 10mm thick panel with 4 layers and a building width of 250mm.

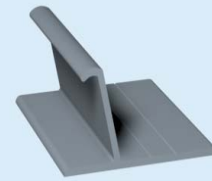


PC 2250-10-4

Thickness (mm)	10
Building width (mm)	250 (+1/-1%)
Weight (kg/m ²)	2.20



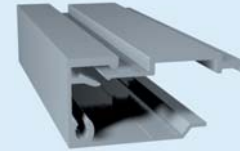
Accessories



Fastener
Item no.: 494004



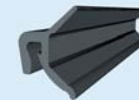
Polycarbonate end cap
Item no.: 395006



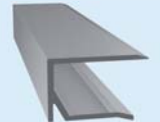
Lateral end profile
Item no.: 461040 with clamp
batten Item no.: 492001



Cover plate for 461040
Item no.: 465010



Gasket for 461040
Item no.: 902901



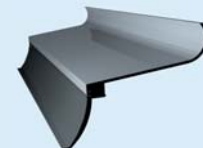
Drip profile
Item no.: 461011



Sealing band 30*5
Item no.: 9019020005



Filling piece
Item no.: 59803535500



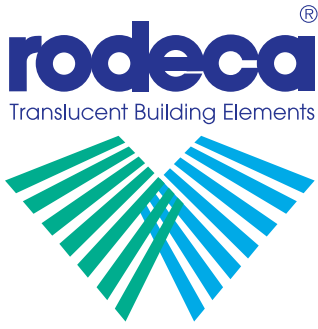
Wall connection profile
Item no.: 470400 with gasket
Item no.: 902106

RODECA GmbH
Freiherr-vom-Stein-Straße 165
D-45473 Mülheim an der Ruhr
Fon +49 (0) 208 76502-0 | Fax +49 (0) 208 76502-11
info@rodeca.de | www.rodeca.de

 **U-Panels**
U-Paneele



U-Panels



U-Panels



Multi Wall Sheets
Hohlkammerscheiben



Translucent Building Elements
Lichtbauelemente

U-Panels

Advantages

- quick and easy installation
- translucent
- heat-insulating
- high temperature resistance
- versatile designing in shape, colour and function
- good long term performance through UV protection
- 200 times tougher than glass
- shatter proof

Applications

- Flat and curved roof lights
- Ventilation
- Facades
- Sports and industrial facilities
- Roofing construction
- Carports
- Canopies
- Refurbishment for wall and roof

General information U-Panels

Rodeca U-Panels are manufactured with a UV coextruded layer to both sides of the panel (except PC 2600-40-7-U). This creates a system that is both reversible and versatile for varying applications using the fastener and glazing bar components available. Both polycarbonate and aluminium glazing bars can be coloured to suit the panels if required. Panel widths vary between 600 and 630mm with thicknesses of 10mm, 16mm, 20mm and 40mm. Rodeca intends to use these panels mainly for roofing constructions but of course some of these panels can be used for façade applications as well.

List of content

Overview manufacturing program U-Panels	page 2
Roofing system PC 2600-40-7-U	page 3
PC 2600-10-4-U for facades	page 4

All installation advice, application requirements and further technical information can be viewed in our technical manuals and installation manuals.





Multi Function Panels
Multi-Funktions-Paneele



RT-Thermolight
RT-Thermolight



Windows
Fenster

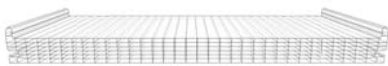


Do it yourself
Do it yourself

Overview manufacturing program U-Panels

Rodeca U-Panels can be used with following system accessories.

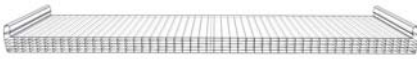
PC 2600-40-7-U



Colours
Standard: crystal / opal
Colour version from 400 m²
Duocolor version from 550 m²

Thickness (mm)	40
Building width (mm)	605 (+1/-1%)
Weight (kg/m ²)	approx. 4,6

PC 2630-20-6-U



Colours
Standard: crystal / opal
Colour version from 400 m²

Thickness (mm)	20
Building width (mm)	630 (+1/-1%)
Weight (kg/m ²)	approx. 3,4

PC 2630-16-6-U



Colours
Standard: crystal / opal
Colour version from 400 m²

Thickness (mm)	16
Building width (mm)	630 (+1/-1%)
Weight (kg/m ²)	approx. 3,2

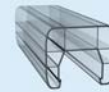
PC 2600-10-4-U



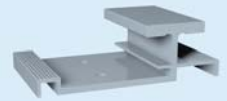
Colours
Standard: crystal / opal
Color version from 400 m²

Thickness (mm)	10
Building width (mm)	600 (+1/-1%)
Weight (kg/m ²)	approx. 2,3

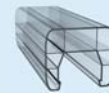
Polycarbonate panels



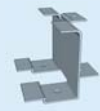
PC glazing bar
Art.No.: 380061



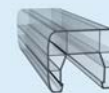
Fastener
Art.No.: 49404000



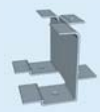
PC glazing bar
Art.No.: 380061



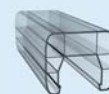
Fastener
Art.No.: 494020N



PC glazing bar
Art.No.: 380061



Fastener
Art.No.: 494016N



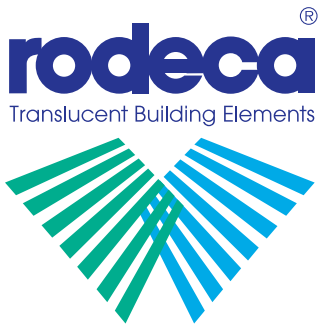
PC glazing bar
Art.No.: 380061



Aluminium
glazing bar
Art.No.: 521033



Fastener
Art.No.: 59401001



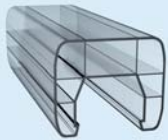
U-Panels

Multi Wall Sheets
Hohlkammerscheiben

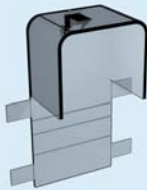
Translucent Building Elements
Lichtbauelemente

U-Panels

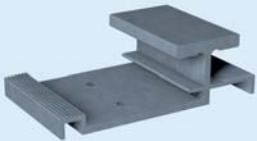
Accessories



Polycarbonate glazing bar
Item no.: 380061



Polycarbonate end cap
Item no.: 395008



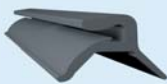
Fastener
Item no.: 49404000



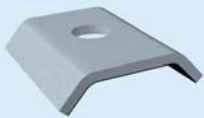
Drip profile
Item no.: 464011



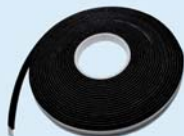
Side profile
Item no.: 420040 with front plate
Item no.: 492001



Gasket for 420040
Item no.: 902901 TPE grey



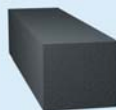
Retention washer
Item no.: 494002



Sealing band 30*5
Item no.: 9019020005



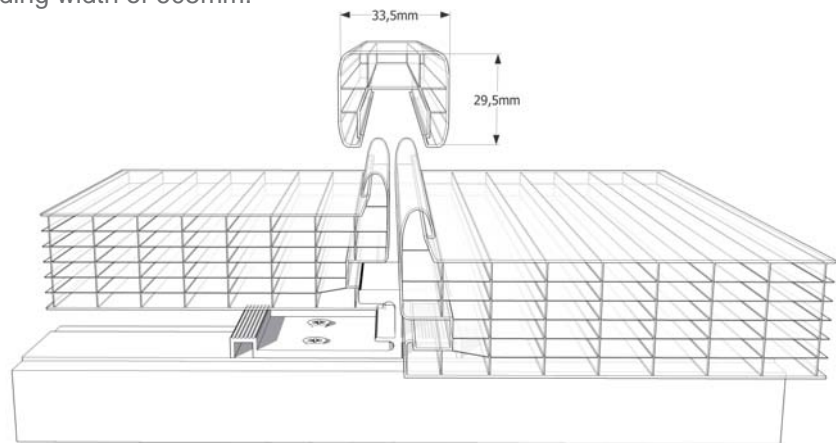
Wall connection profile
Item no.: 470400 with
gasket Item no.: 902106



Fill piece
Item no.: 59803425565

U-Panel PC 2600-40-7-U*

The U-Panel PC 2600-40-7-U is a 40mm thick panel with 7 layers and a building width of 605mm.

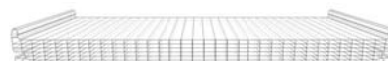


pitched application
- min. 5° pitch



curved application
- min. radius 10m

Glazing



PC 2600-40-7-U

Thickness (mm)	40
Building width (mm)	605 (+1/-1%)
Weight (kg/m ²)	approx. 4.60

*only one side coextrusion






 Multi Function Panels
Multi-Funktions-Paneele

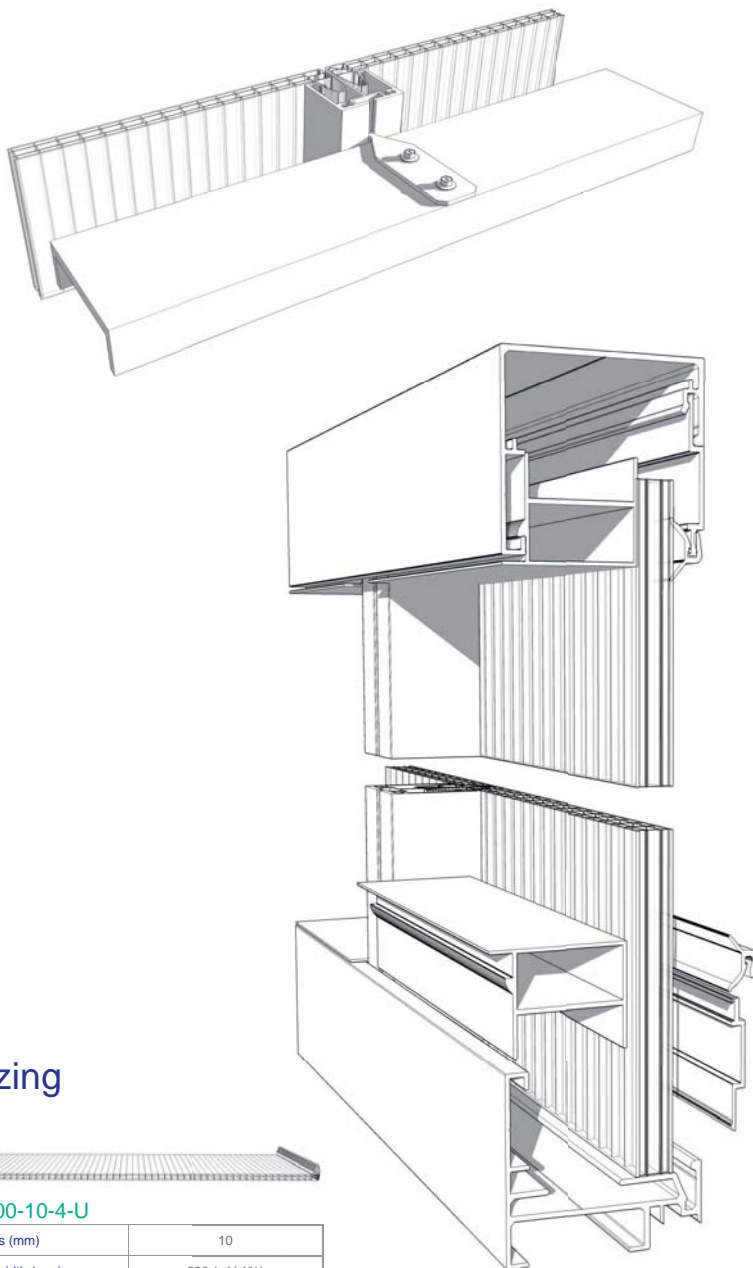
 RT-Thermolight
RT-Thermolight

 Windows
Fenster

 Do it yourself
Do it yourself

U-Panel PC 2600-10-4-U

The U-Panel PC 2600-10-4-U is a 10mm thick panel with 4 layers and a building width of 600mm. With the described system accessories this panel can be used additionally for walling applications.



Glazing



PC 2600-10-4-U

Thickness (mm)	10
Building width (mm)	600 (+1/-1%)
Weight (kg/m ²)	approx. 2.3

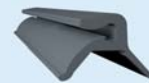
Accessories



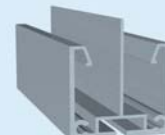
Top and side profile
Item no.: 420040 with clamp batten
Item no.: 492001



Base profile
Item no.: 420031 with clamp batten
Item no.: 492001



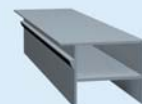
Gasket for 420040
Item no.: 902901 TPE grey



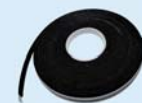
Glazing bar
Item no.: 521033



Fastener for glazing bar
Item no.: 594033



Polycarbonate fill piece
Item no.: 38109160



Sealing band 30*5
Item no.: 9019020005

RODECA GmbH
Freiherr-vom-Stein-Straße 165
D-45473 Mülheim an der Ruhr
Fon +49 (0) 208 76502-0 | Fax +49 (0) 208 76502-11
info@rodeca.de | www.rodeca.de



ООО «Торгово-Строительная Компания Империя»

109382, Россия, г.Москва, ул.Нижние поля, 31
+7(495)646-81-65
info@tbc-empire.ru
www.tbc-empire.ru


LLC TBC Empire


109382, Russia, Moscow, Nizhniye polya,31
+7(495)646-81-65
info@tbc-empire.ru
www.tbc-empire.ru

The RODECA product groups overview / Die RODECA Produktgruppen im Überblick:

 **Translucent Building Elements**
Lichtbauelemente


 **Multi Wall Sheets**
Hohlkammerscheiben

 **Multi Function Panels**
Multi-Funktions-Paneele

 **U-Panels**
U-Paneele

 **RT-Thermolight**
RT-Thermolight

 **Windows**
Fenster

 **Do it yourself**
Do it yourself